

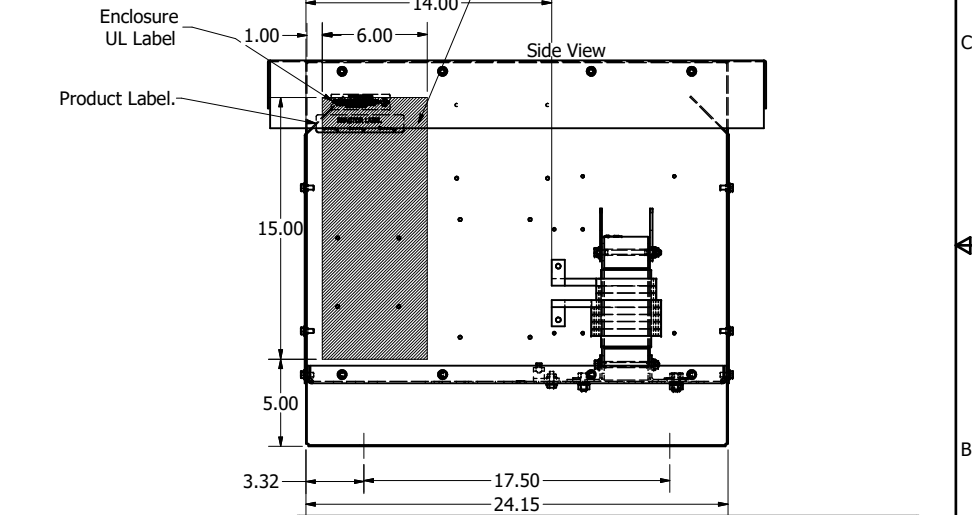
480 Rated Voltage, 600 Max Voltage, High Z, Impedance.

Part Number	Horsepower (HP)	Motor Amps (A)	Maximum Amps (A)	Inductance (uH)	Weight (LBS)	Losses (W)	Available Lug Kit	Terminal Hole Size (Inches)
KDRG3HE3R	125	156	160	209	130	290	SLK10	0.28

Ground Lug.
See IOM Manual, Part# 30895
Table S2/0, Wire Size And
Torque.

Suggested
Customer Wire Entrance
Bottom Of Enclosure.
See Note: 6
(Non Removeable Panel)

Suggested
Customer Entrance
Either Side Of Enclosure.
See Note: 6
(Non Removeable Panel)



(800) 824-8282 transcoll.com

TCI, LLC
Greenfield, WI, USA
transcoll.com
800-824-8282

KDRUL Drive Reactor
KDR - Motor Amps -
3PH, 50/60Hz, -V Rated, 600V Max, -A Max
40C Amb Max, 155C Max, RoHS
Manual #30895 LUG KIT #SLK-

UL LISTED
cULus LISTED
E116124

DATE CODE: A1 A2 B1 B2 C1 C2

- Notes:
1. KDR Lug Kits sold separately. Contact TCI.
 2. UL file number: cULus Listed File E116124.
 3. KDR Drive Reactors Comply With The Thermal and Altitude Standards Set Forth by NEMA ST20-1992.
 4. KDR IOM Manual Part Number 30895
 5. Material(s) Shall be RoHS Compliant
 6. Customer Is Responsible For Installation To Meet All National And Local Electrical Codes.

THE INFORMATION AND DESIGNS CONTAINED IN THIS DRAWING ARE CONFIDENTIAL AND THE PROPRIETARY PROPERTY OF ALLIED MOTION TECHNOLOGIES INC. AND ITS SUBSIDIARIES. NEITHER THIS DESIGN NOR ANY INFORMATION CONTAINED IN THIS DRAWING MAY BE REPRODUCED OR DISCLOSED TO OTHERS WITHOUT THE EXPRESS WRITTEN CONSENT OF ALLIED MOTION TECHNOLOGIES INC. AND ITS SUBSIDIARIES.				TOLERANCES (EXCEPT AS NOTED)				TCI An Official Motors Company KDR G Frame, Copper Flag, Enclosed Type 3R, Inductor Drawing			
				DECIMAL				© 2023 TCI, LLC			
				.XX ± .25 .XXX ± .10							
				FRACTIONAL				DRN BY: DSW DATE: 9/1/2023 107618-9DG			
B 6677, Update to 32766 flag 5/21/2024 DSW				ANGULAR				SCALE: 1/5			
A 6044 Busbar to Flag Termination 9/1/2023 DSW				± 1°				SHT 1 OF 1			
NO REVISION DATE BY											